

JOB SPECIFICATION SHEET

1. Meter Size:

2. System Type:

3. Timer Program Settings:

4. Drain Line Flow Control: _____ gpm

5. Brine Line Flow Control: _____ gpm

6. Injector Size#: _____

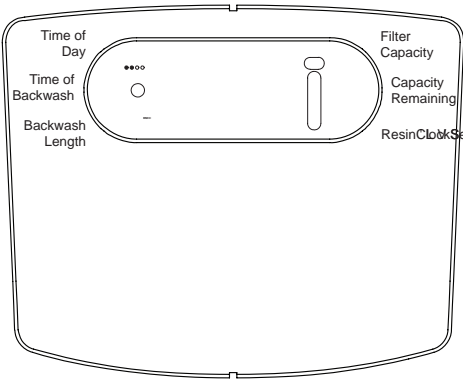
CAUTION If grid plate is used, cut air check height even with grid plate. This is critical on 6", 7", 8" and 9" tanks. The brine refill water must come above the grid plate and make contact with the salt.

NOTE: All electrical connections must be connected according to local codes. Be certain the outlet is uninterrupted.



START-UP INSTRUCTIONS LXT

TIMER FEATURES LXT



NOTE: Do not use granulated or rock salt.

TIMER OPERATION LXT

Meter Delayed Control

Control Operation During Regeneration

Control Operation During Programming

Manually Initiating a Regeneration

START-UP INSTRUCTIONS SXT

Setting the Time of Day

NOTE: Do not use granulated or rock salt.

TIMER FEATURES SXT

Queueing a Regeneration

Regenerating Immediately

Features of the SXT:

TIMER OPERATION SXT

Meter Immediate Control

NOTE: If the unit is a filter or upflow, the cycle step order may change.

Meter Delayed Control

NOTE: A queued regeneration can be initiated by pressing the Extra Cycle button. To clear a queued regeneration, press the Extra Cycle button again to cancel. If regeneration occurs for any reason prior to the delayed regeneration time, the manual regeneration request will be cleared.

Control Operation During A Power Failure

Time Clock Delayed Control

Day of the Week Control

CAUTION If power fails during a regeneration cycle, the valve will remain in it's current position until power is restored. The valve system should include all required safety components to prevent overflows resulting from a power failure during regeneration.

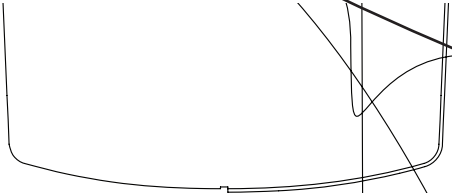
Control Operation During Regeneration

Control Operation During Programming

Manually Initiating a Regeneration

MASTER PROGRAMMING MODE LXT

CAUTION Before entering Master Programming, please contact your local professional water dealer.



MASTER PROGRAMMING MODE LXT

continued

5800 Filter Meter

DIAGNOSTIC PROGRAMMING MODE

LXT

| Demand - US Units | |
|-------------------|-------------|
| Diagnostic Code | Description |
| | |
| | |
| | |
| | |
| | |
| | |
| | |
| | |
| | |
| | |
| | |
| | |
| | |
| | |
| | |

| Demand - Metric Units | |
|-----------------------|-------------|
| Diagnostic Code | Description |
| | |
| | |
| | |
| | |
| | |
| | |
| | |
| | |
| | |
| | |
| | |
| | |
| | |
| | |
| | |

| Time Clock | |
|-----------------|-------------|
| Diagnostic Code | Description |
| | |
| | |

NOTE: The English timer will be in gallons. The Metric timer will be in liters for all flow rates.

Diagnostic Programming Mode Steps

CHART SXT

| Master Programming Options | | | |
|----------------------------|-----------|---------------------|---------|
| Abbreviation | Parameter | Option Abbriviation | Options |
| | | | |
| | | | |
| | | | |
| | | | |
| | | | |
| | | | |
| | | | |
| | | | |
| | | | |
| | | | |
| | | | |
| | | | |
| | | | |
| | | | |
| | | | |
| | | | |
| | | | |
| | | | |
| | | | |
| | | | |
| | | | |
| | | | |
| | | | |
| | | | |
| | | | |
| | | | |
| | | | |
| | | | |
| | | | |
| | | | |
| | | | |
| | | | |
| | | | |
| | | | |
| | | | |
| | | | |
| | | | |
| | | | |
| | | | |
| | | | |
| | | | |
| | | | |
| | | | |
| | | | |
| | | | |
| | | | |
| | | | |
| | | | |
| | | | |
| | | | |
| | | | |
| | | | |
| | | | |
| | | | |
| | | | |
| | | | |
| | | | |
| | | | |
| | | | |
| | | | |
| | | | |
| | | | |
| | | | |
| | | | |
| | | | |
| | | | |
| | | | |
| | | | |
| | | | |
| | | | |
| | | | |
| | | | |
| | | | |
| | | | |
| | | | |
| | | | |
| | | | |
| | | | |
| | | | |
| | | | |
| | | | |
| | | | |
| | | | |
| | | | |
| | | | |
| | | | |
| | | | |
| | | | |
| | | | |
| | | | |
| | | | |
| | | | |
| | | | |
| | | | |
| | | | |
| | | | |
| | | | |
| | | | |
| | | | |
| | | | |
| | | | |
| | | | |
| | | | |
| | | | |
| | | | |
| | | | |
| | | | |
| | | | |
| | | | |
| | | | |
| | | | |
| | | | |
| | | | |
| | | | |
| | | | |
| | | | |
| | | | |
| | | | |
| | | | |
| | | | |
| | | | |
| | | | |
| | | | |
| | | | |
| | | | |
| | | | |
| | | | |
| | | | |
| | | | |
| | | | |
| | | | |
| | | | |
| | | | |
| | | | |
| | | | |
| | | | |
| | | | |
| | | | |
| | | | |
| | | | |
| | | | |
| | | | |
| | | | |
| | | | |
| | | | |
| | | | |
| | | | |
| | | | |
| | | | |
| | | | |
| | | | |
| | | | |
| | | | |
| | | | |
| | | | |
| | | | |
| | | | |
| | | | |
| | | | |
| | | | |

NOTE: Some items may not be shown depending on timer configuration. The timer will discard any changes and exit Master Programming Mode if any button is not pressed for 5 minutes.

MASTER PROGRAMMING MODE SXT

1. Display Format (Display Code DF)

Setting the Time of Day

| Display Format Setting | Unit of Volume | Time Display |
|---------------------------|----------------|--------------|
| | | |
| | | |

Entering Master Programming Mode

Exiting Master Programming Mode

Resets

Soft Reset

Master Reset

MASTER PROGRAMMING MODE SXT
continued

4. Control Type (Display Code CT)

| Abbreviation | Parameter |
|--------------|-----------|
| | |
| | |
| | |
| | |

5. Unit Capacity (Display Code C)

6. Feedwater Hardness (Display Code H)

7. Reserve Selection (Display Code RS)

| Abbreviation | Parameter |
|--------------|-----------|
| | |
| | |

8. Safety Factor (Display Code SF)

9. Fixed Reserve Capacity (Dispaly Code RC)

MASTER PROGRAMMING MODE SXT
continued

10. Day Override (Display Code DO)

| Abbreviation | Cycle Step |
|--------------|------------|
| | |
| | |
| | |
| | |
| | |
| | |
| | |

11. Regeneration Time

13. Day of Week Settings

12. Regeneration Cycle Step Times

| Abbreviation | Cycle Step |
|--------------|------------|
| | |
| | |
| | |
| | |
| | |
| | |

MASTER PROGRAMMING MODE SXT

continued

14. Current Day (Display Code CD)

15. Flow Meter Type (Display Code FM)

| Abbreviation | Description |
|--------------|-------------|
| | |
| | |
| | |
| | |
| | |
| | |
| | |
| | |

16. Meter Pulse Setting (Display Code K)

17.

USER PROGRAMMING MODE SXT

| Abbreviation | Parameter | Description |
|--------------|-----------|-------------|
| | | |
| | | |
| | | |
| | | |
| | | |

NOTE: Some items may not be shown depending on timer configuration. The timer will discard any changes and exit User Programming Mode if a button is not pressed for 60 seconds.

User Programming Mode Steps

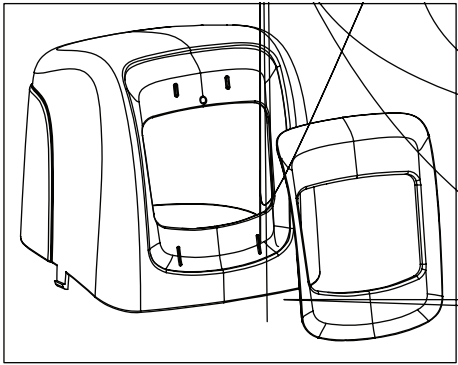
DIAGNOSTIC PROGRAMMING MODE
SXT

| Abbreviation | Parameter | Description |
|--------------|-----------|-------------|
| | | |
| | | |
| | | |
| | | |
| | | |
| | | |

NOTE: Some items may not be shown depending on timer configuration. The timer will discard any changes and exit User Programming Mode if a button is not pressed for 60 seconds.

Diagnostic Programming Mode Steps

POWERHEAD ASSEMBLY SXT

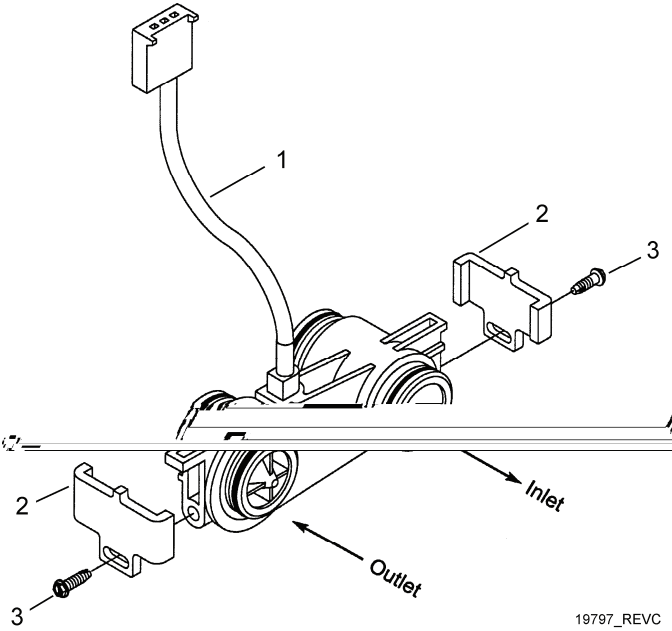


| Item No. | QTY | Part No. | Description |
|----------|-----|----------|-------------|
|----------|-----|----------|-------------|

5800 CONTROL VALVE ASSEMBLY
DOWNFLOW/UPFLOW

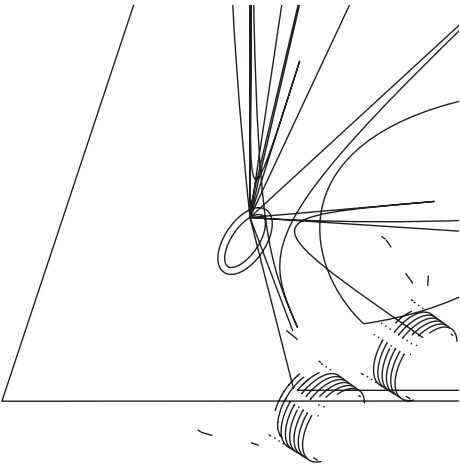
| Item No. | QTY | Part No. | Description |
|----------|-----|----------|-------------|
|----------|-----|----------|-------------|

3/4" PLASTIC TURBINE METER
ASSEMBLY



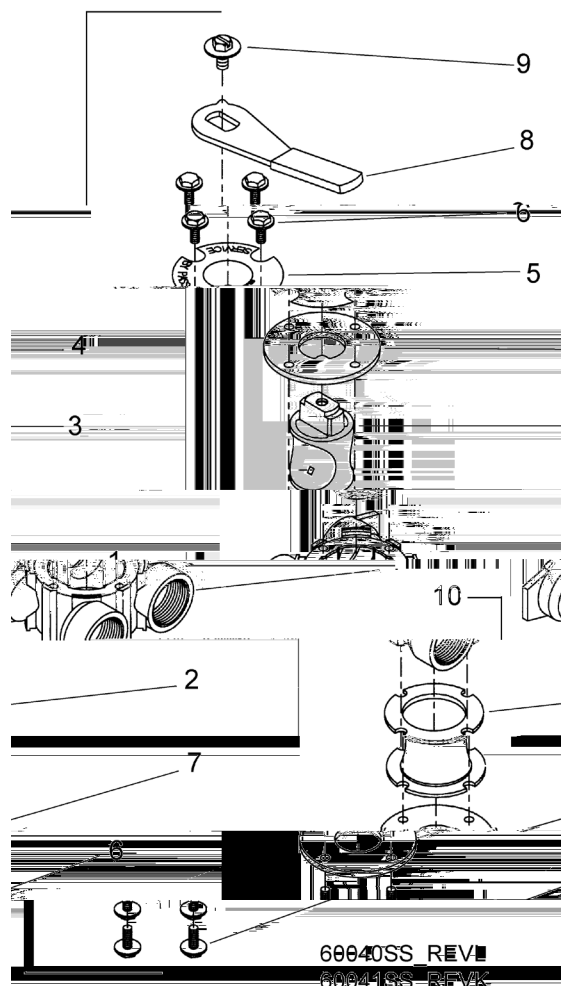
| Item No. | QTY | Part No. | Description |
|----------|-----|----------|-------------|
|----------|-----|----------|-------------|

BYPASS VALVE ASSEMBLY (PLASTIC)



| Item No. | QTY | Part No. | Description |
|----------|-----|----------|-------------|
|----------|-----|----------|-------------|

Not Shown:



| Item No. | QTY | Part No. | Description |
|----------|-----|----------|-------------|
|----------|-----|----------|-------------|

| Item No. | QTY | Part No. | Description |
|----------|-----|----------|-------------|
|----------|-----|----------|-------------|

Not Shown:

WATER CONDITIONER FLOW DIAGRAMS

Downflow

1. Service Position

4. Rapid Rinse Position

2. Backwash Position

5. Brine Tank Refill Position

3. Brine/Slow Rinse Position

WATER CONDITIONER FLOW
DIAGRAMS continued

Upflow

1. Service Position

4. Rapid Rinse Position
2. Backwash Position

5. Brine Tank Refill Position
3. Brine/Slow Rinse Position

TROUBLESHOOTING LXT

Error Codes

NOTE: Error codes appear on the In Service display.

| Error Code | Error Type | Cause | Reset and Recovery |
|------------|------------|-------|--------------------|
| | | | |
| | | | |
| | | | |
| | | | |

TROUBLESHOOTING SXT

Error Codes

NOTE: Error codes appear on the In Service display.

| Error Code | Error Type | Cause | Reset and Recovery |
|------------|------------|-------|--------------------|
| | | | |
| | | | |
| | | | |
| | | | |
| | | | |

